

Prepared by: Zieske Land Surveying, Inc. Address: Box 94, Windom, MN 56101 Phone: (507) 831-0100

UNITED STATES PUBLIC LAND SURVEY CORNER CERTIFICATE FOR

Land survey monuments situated in Section 19, Township 105 North, Range 40 West, of the Fifth Principal Meridian, Murray County, Minnesota..

Previously recorded in N/A in County Recorder's Office.

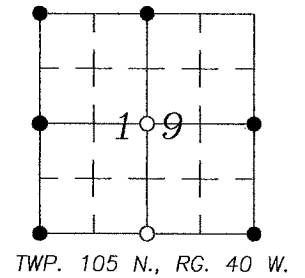
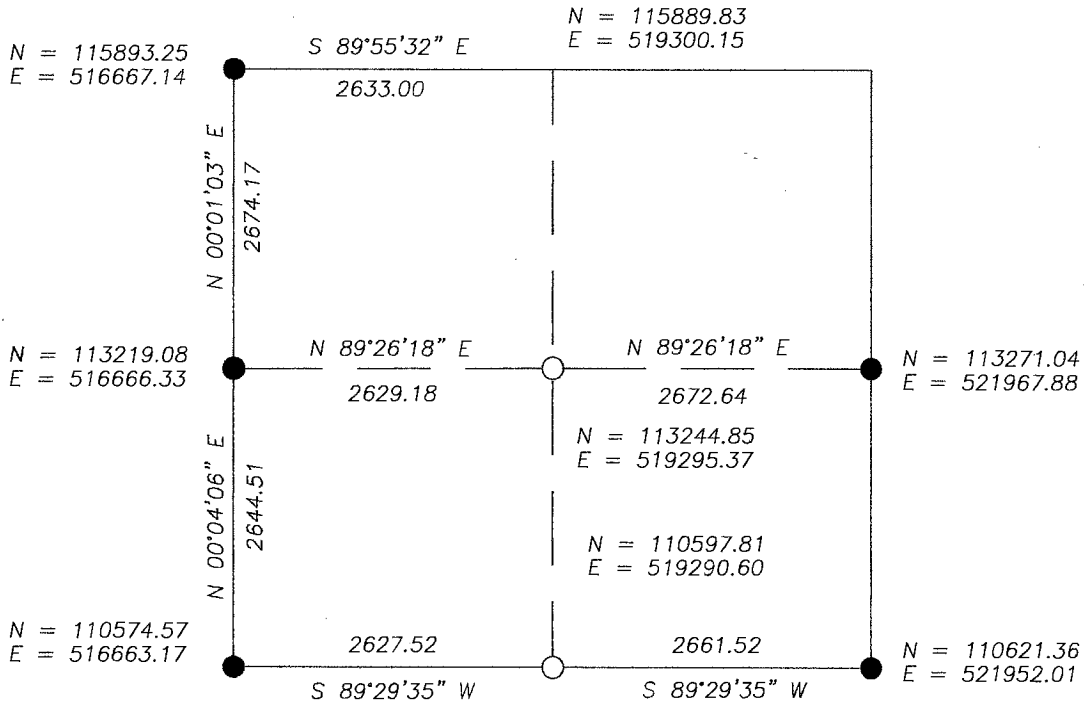
(Show reason for preparing this certificate, the evidence and detailed procedure used in establishing the corner position & monumentation found or placed.)

MONUMENT DESCRIPTION AND REMARKS: On January 7, 2014 we set survey marker with cap 23008 at the South 1/4 Corner on line between the SE & SW corner & at the proportionate distances as per May 10, 1925 survey record. Monument is on centerline of County Road. We also set Center of Section by intersection opposite quarter corners as per PLS Instructions. Note: We did search with metal detector for South 1/4 but no signal was detected.

MURRAY COUNTY COORDINATES

PLAN--VIEW

NAD-83 (2007)



I hereby certify that this land survey, plan, or report was prepared by me and under my direct supervision and that I am a duly licensed Land Surveyor under the laws of the state of Minnesota.



Corners	Section	Township	Range
S 1/4	19	105	40
CTR	19	105	40

JAN 22 2014

Signature Perry L. Zieske Typed or Printed Name: Perry L. Zieske

Date 1-7-14 Reg. No.: 23008

James V. Johnson